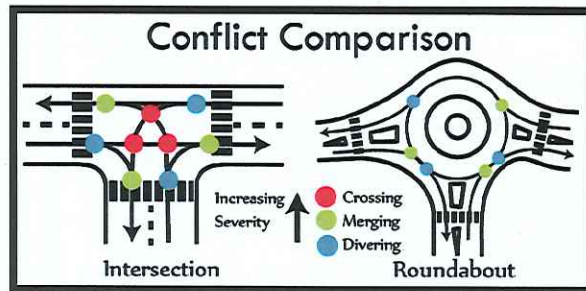


**Location:** SR 129 (Riverside Rd) and Lakeview Rd Intersection in Santa Cruz county near Watsonville.

**Need:** Intersection is used by freight and goods movement, currently making up 14% of the traffic. Transitional point from rural to urban setting.

**Purpose:** Intersection improvements for safety and conflict reduction.



**Solution:** Construct a roundabout that has the means to support the freight and commuter routes through:

- Narrowing the available travel lanes
- Yields allows for a minimum delay and idling
- Reducing speed to about 20 mph
- Reducing the number and severity of any collision
- Increasing the capacity
- Reduces fuel consumption, emissions and noise
- Has the potential to increase capacity without extensive construction
- Low maintenance cost
- Less vehicle wear and tear.

## Cost & Schedule

This project is eligible for federal funding paid for by the State Highway Operations and Protection Program at an amount of 4.5 million dollars. Construction would begin 2020.



## Stakeholders



(add any businesses/ groups that have been involved)

## Contact Information



**Caltrans**  
**Project Manager**  
Luis Duazo  
805-542-4678

## SR 129 / Lakeview Rd Intersection Improvements

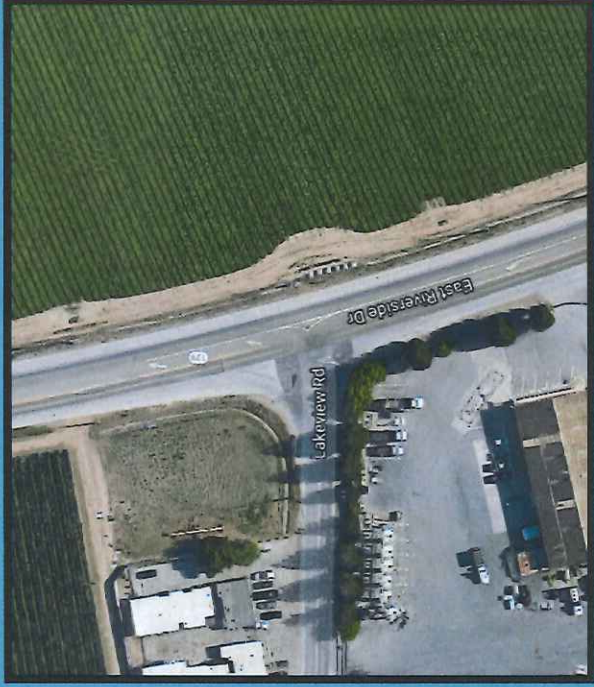


## Roundabout Safety & Intersection Design

### Caltrans Mission Statement:

Provide a safe, sustainable, integrated and efficient transportation system to enhance California's economy and livability.

Existing:



### 3-Way Stop

- There were 7 injuries and 1 fatality out of the 23 collisions from the last 5 years
- Dirt and debris in the shoulder

### Intersection

- Two lane county road with 12ft lanes and 8ft shoulders with surrounding Agricultural land

### Sidewalk

- Little to no sidewalk
- Bike access but is not a separate lane
- Bicycle traffic is usually recreational and touring groups
- Foot traffic is possible, if workers park on the shoulder and walk to work

## FUTURE:

### Roundabout

- Paid with Federal Fund
- An anticipated 35% reduction in all accidents, 76% Reduction in injuries, 90% in fatal accidents

### Truck Apron

- Traffic calming
- Allows trucks to work through power outages
- Continues to work through power outages
- Allows trucks to make U-turns

### Truck Apron

- Stay in one lane at entry points but overlap in circulatory roadways
- Designed for the largest legal California Trucks and oversized vehicles.

### Sidewalk

- Accounts for Bike as a vehicles (i.e. Shared

### Road) or pedestrian

- Pedestrians can cross one direction of traffic at a time
- Pedestrians cross in two stages using the Splitter Island

### Central Island

- Native drought resistant plants
- Aesthetic pleasing

### Splitter Island

- Prevent headlights from shining through
- Advanced beacons
- Raised Island Curves

